



System Requirements

The following are the minimum system requirements required to view our interactive 3D scenes:

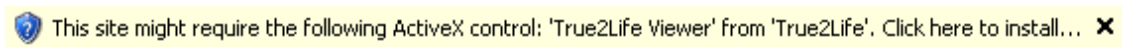
- Internet Explorer 5.5+
- True2Life Plugin (installed automatically)
- Windows 95, 98, Me, NT4, 2000 or XP.
- DirectX 7.0 or later or OpenGL 1.1 or later.
- 32 MB system memory or more.
- Pentium 133 processor or greater.
- Graphics card with 8MB RAM.

The following are recommended for optimal performance:

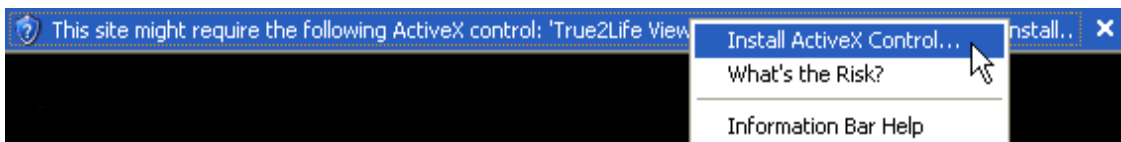
- Pentium II processor or greater.
- Gaming graphics card with 64MB+ RAM.

Windows XP Service Pack 2

In order to see the interactive 3D content embedded within the web site, you will need to accept the automatic download and installation of the True2Life viewing software. For users with Windows XP service pack 2 the following message bar may appear at the top of the screen:



You will need to left click on this and then left click on "Install ActiveX Control...":



Which brings up the following window:

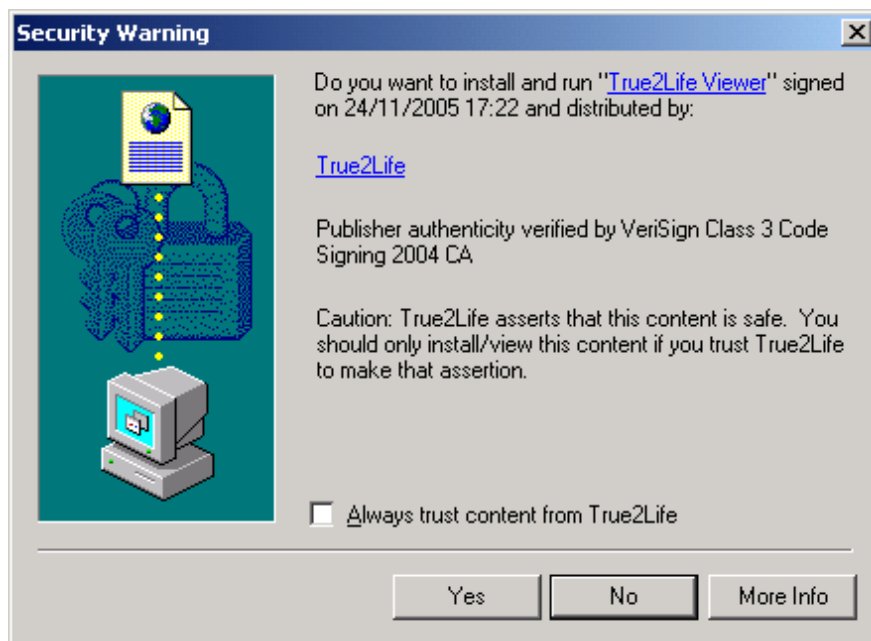


If you then click "Install" the True2Life viewer will install automatically and the interactive 3D scene will be downloaded and displayed:



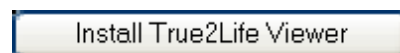
Windows 98/ME/2000/XP Service Pack 1

For users with Windows 95/98/ME/2000/XPsp1 users the following dialogue box is displayed when the page is loaded:

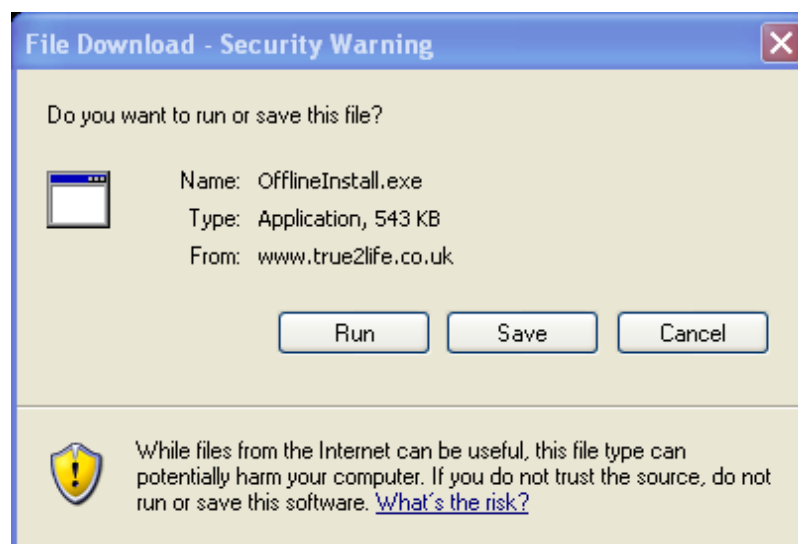


Alternative Method

In some cases the True2Life viewer is not installed automatically, if this happens the following button will be visible allowing the user to manually download and run the True2Life viewer installation:

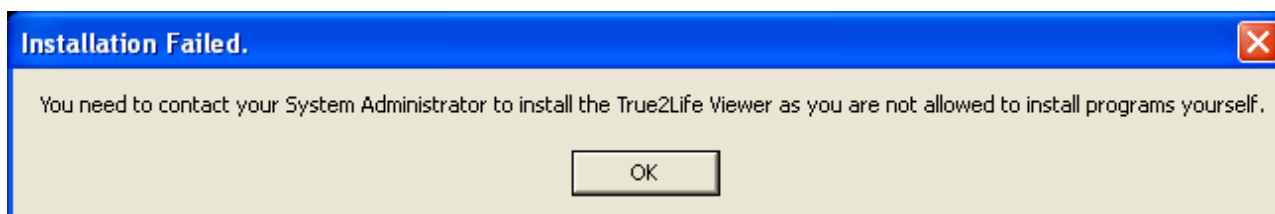


The following window will then appear:



If you get an error saying you do not have rights to install 3rd Party controls

In order to install software on a Microsoft Windows computer you need to have administrative privileges. On some public computers such as in universities or office buildings when trying to install the True2Life viewer the following error message is given:



In this case you will need to contact whoever is in charge of the network in order to install the True2Life viewer

If you are still having problems viewing the True2Life 3D content then please email our support department:

support@true2life.co.uk